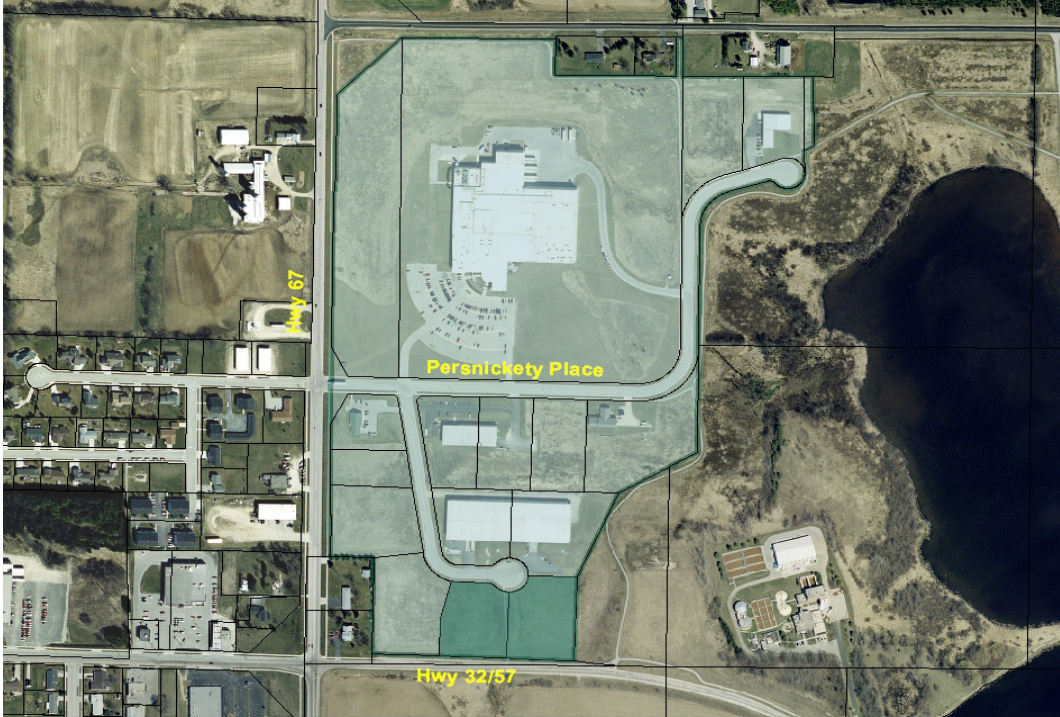




City of Kiel, WI – Persnickety Business Park



Site Description

The Persnickety Business Park is located at the cross roads of USH 67 and USH 32/57. The park is full amenity and shovel ready business park is located 20 minutes from Interstate-43.

Businesses such as Sargento Foods, Rhine Machining and Fabrication, City Limits Hair Salon, Phoebe Products, HCS Warehousing, American Dairy Brands, and Meyer Plumbing are located here.

Two lots are left in this very popular business park.

Parcels can be configured to meet specific project needs.

Site Specifications

Site Information

Total Acres:	66.76
Available:	3.56
Number of Acres Sold:	63.19
Expansion Plans:	No
Largest Contiguous Acreage Available:	2.00
Existing Businesses:	7
Zoning:	Light Industrial
Covenants:	Yes
Topography:	Flat
Floodplain:	No
Soil borings:	Yes
Curb:	Yes
Paved Streets:	Yes
Gutter:	Yes
Streetlight:	Yes

Transportation

Nearest major hwy:	USH 32/57 USH 67
Distance to nearest hwy:	0.25 miles
Lanes:	4
Nearest comm. airport:	Outagamie County
Distance to airport:	38 miles
Rail service:	No
Nearest port facility:	46 miles

Utilities

Electricity supplier:	City of Kiel
Utilities:	Yes
3-phase electric:	Yes
Gas supplier:	WPS
Municipal water:	Yes
Water source:	Well
Municipal Sewer:	Yes
Stormwater:	Yes

Telecommunications

Fiber optics:	No
Digital switching:	No

Incentives

Manitowoc County Revolving Loan Fund
Industrial Revenue Bonds
TIF
Technology Zone Tax Credits

Terms

Asking Price:	\$2,500/ac
Terms Available:	Yes
Ownership:	Municipal

Community Contact

Name:	Dennis Dederig
Title:	City Administrator
Organization:	City of Kiel
Address:	621 Sixth St
City:	Kiel
State:	Wisconsin
ZIP:	53042
Phone:	(920) 894-2909
Fax:	(920) 894-2585
Email:	admin@ci.kiel.wi.us
Web:	www.ci.kiel.wi.us