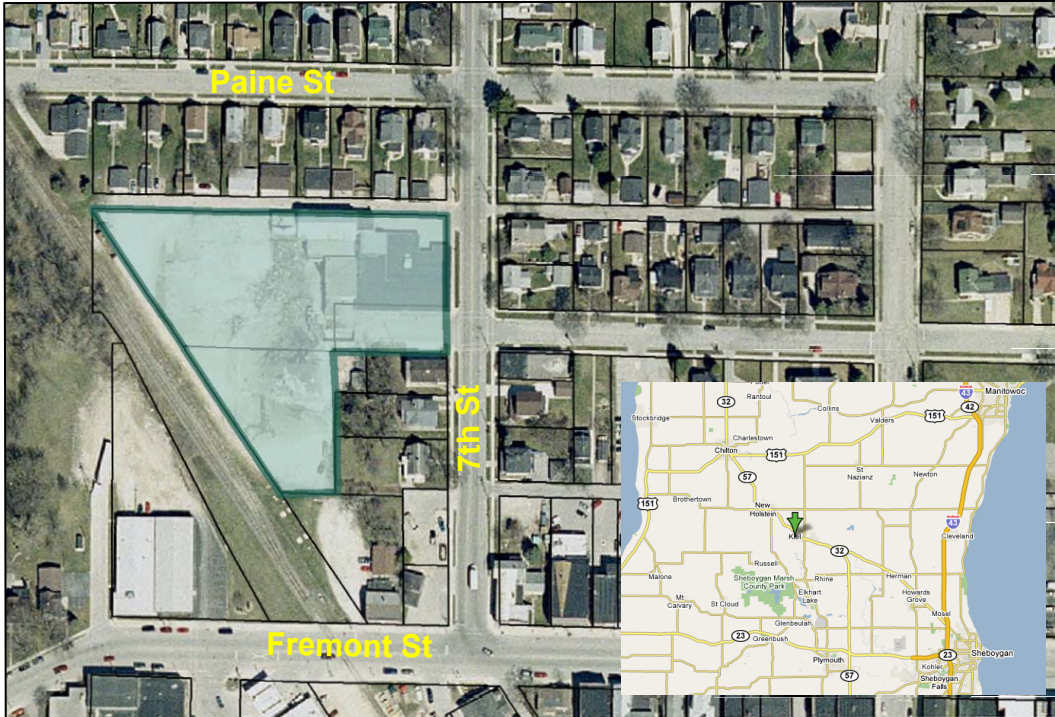




City of Kiel, WI – Downtown Redevelopment Site



Site Description

All buildings have been cleared from this 3.27 acre site in downtown Kiel.

The City of Kiel has created an environmental remediation TIF and has cleared and cleaned-up the property. The site is shovel ready for development.

Incentives for development are available.

The possibilities are endless, including commercial, residential, and multi-family development.

Site Specifications

Site Information

Site Address: 714 Paine
Site Size (acres): 3.27
Zoning: Commercial
Topography: Flat
Setting: Downtown

Transportation

Nearest major highways: Hwy 32/57
Distance to nearest highways: 0.1 miles
Number of lanes: 2
Nearest interstate: I-43
Distance to nearest interstate: 27 miles
Number of lanes: 4
Nearest commercial airport: Austin Straubel
Distance to airport: 48 miles
Rail service: Yes
Nearest port facility: 2 miles

Utilities

Electricity supplier: Kiel Public Utilities
Gas supplier: WPS
Municipal water: Yes
Water source: Municipal Well

Telecommunications

Fiber optics: Yes
Digital switching: Yes

Incentives

Revolving Loan Fund
Industrial Revenue Bonds
TIF

Terms

Sale Price: Negotiable
Terms Available: Yes

Community Contact

Name: Dennis Dederig
Title: City Administrator
Organization: City of Kiel
Address: 621 Sixth St
PO Box 98
City: Kiel
State: Wisconsin
ZIP: 53042
Phone: (920) 894-2909
Fax: (920) 894-2585
Email: admin@ci.kiel.wi.us
Web: www.kielwi.org